

Figure 207. Right Front Fender

Section II. REPAIR PARTS LIST

(1) ILLUSTRATION		(2)	(3)	(4)	(5)	(6)	(7)	(8)
(a) FIG NO.	(b) ITEM NO.	SMR CODE	NATIONAL STOCK NUMBER	CAGE	PART NUMBER	DESCRIPTION USABLE ON CODE	UM	QTY INC IN UNIT
						GROUP 1802 RIGHT FRONT FENDER		
207	1	PFO00	2510-01-353-9762	45152	1805140U	FENDER ASSEMBLY RH	EA	1
207	2	PAOZZ	5310-00-584-5272	96906	MS35338-48	.WASHER, LOCK 1/2	EA	4
207	3	PAOZZ	5305-00-044-4153	96906	MS90725-109	.SCREW, CAP, HEX 1/2-13 X 1	EA	4
207	4	PAOZZ	5306-01-287-5715	52167	WC0414PB	.BOLT, MACHINE 3/8-16 X 1 1/4	EA	5
207	5	PFOZZ	2510-01-354-2855	45152	1802840	.FENDER, RH FRONT	EA	1
207	6	PAOZZ	5310-01-288-1116	82458	T893R	.NUT, SELF-LOCKING 3/8-16	EA	5
207	7	PFOZZ	6220-01-355-9742	45152	1898740	.GUARD, LAMP	EA	1
207	8	MOOZZ	- - -	45152	26947BX-10	.MOLDING, QUICKEDGE MAKE FROM PART NUMBER 75000317. CAGE 78175. APPROXIMATELY 10 INCHES LONG.	EA	1
207	9	PFOZZ	2590-01-354-2551	45152	1895990	.BRACKET, VEHICULAR	EA	1
207	10	PFOZZ	2590-01-353-9702	45152	1895980	.BRACKET, VEHICULAR	EA	1
207	11	PFOZZ	6220-01-355-8929	45152	1896000	.GUARD, LAMP	EA	2
207	12	PAOZZ	5305-01-357-4682	45152	1754310	SCREW, THD FORMING 3/8-16 X 3	EA	5
207	13	PAOZZ	5310-00-880-0626	19207	10892331	WASHER, FLAT 3/8	EA	5
207	14	PAOZZ	5306-01-287-5714	52167	WC0412PB	BOLT, MACHINE 3/8-16 X 1	EA	4
207	15	PAOZZ	5305-01-353-8267	45152	1754220	SCREW, CAP 5/16-18 X 1 1/2	EA	3
207	16	PFOZZ	5340-01-353-6155	45152	1891600	BRACKET, FENDER RH	EA	1
207	17	PAOZZ	5310-01-288-1116	82458	T893R	NUT, SELF-LOCKING 3/8-16	EA	9
207	18	PFOZZ	5340-01-353-6392	45152	1909270	PLATE, MOUNTING	EA	1
207	19	PAOZZ	5310-01-340-5671	45152	1333510	NUT, SELF-LOCKING 5/16-18	EA	3
207	20	PFOZZ	2540-01-354-0590	40501	C05772	GUARD, SPLASH	EA	1
207	21	PAOZZ	5310-01-111-0645	45152	110311A	NUT, SELF-LOCKING 5/8-11	EA	2
207	22	PAOZZ	2510-01-354-2788	45152	1913790	FENDER, INNER LINER	EA	1
207	23	PAOZZ	5325-00-998-3351	94222	85-47-101-15	RECEPTACLE, 1/4 TURN	EA	4
207	24	PAOZZ	5310-01-393-9923	45152	2036160	WASHER, RETAINING NYLON	EA	4
207	25	PAOZZ	5325-00-291-0165	94222	85-12-280-16	STUD, 1/4 TURN	EA	4
207	26	PAOZZ	5305-01-150-7736	52167	WH0616TB	SCREW, CAP, HEXAGON 1/2-13 X 1 1/2	EA	2
207	27	PAOZZ	5310-01-159-8178	45152	110310A	NUT, SELF-LOCKING 1/2-13	EA	2
207	28	PAOZZ	5306-01-156-5429	45152	115217A	BOLT, MACHINE, FLG 5/8-11 X 2	EA	2
207	29	PFOZZ	2510-01-354-0448	45152	1803520	BRACE, FENDER	EA	1
207	30	PFOZZ	2510-01-354-0447	45152	1803480W	BRACE, FENDER RH	EA	1

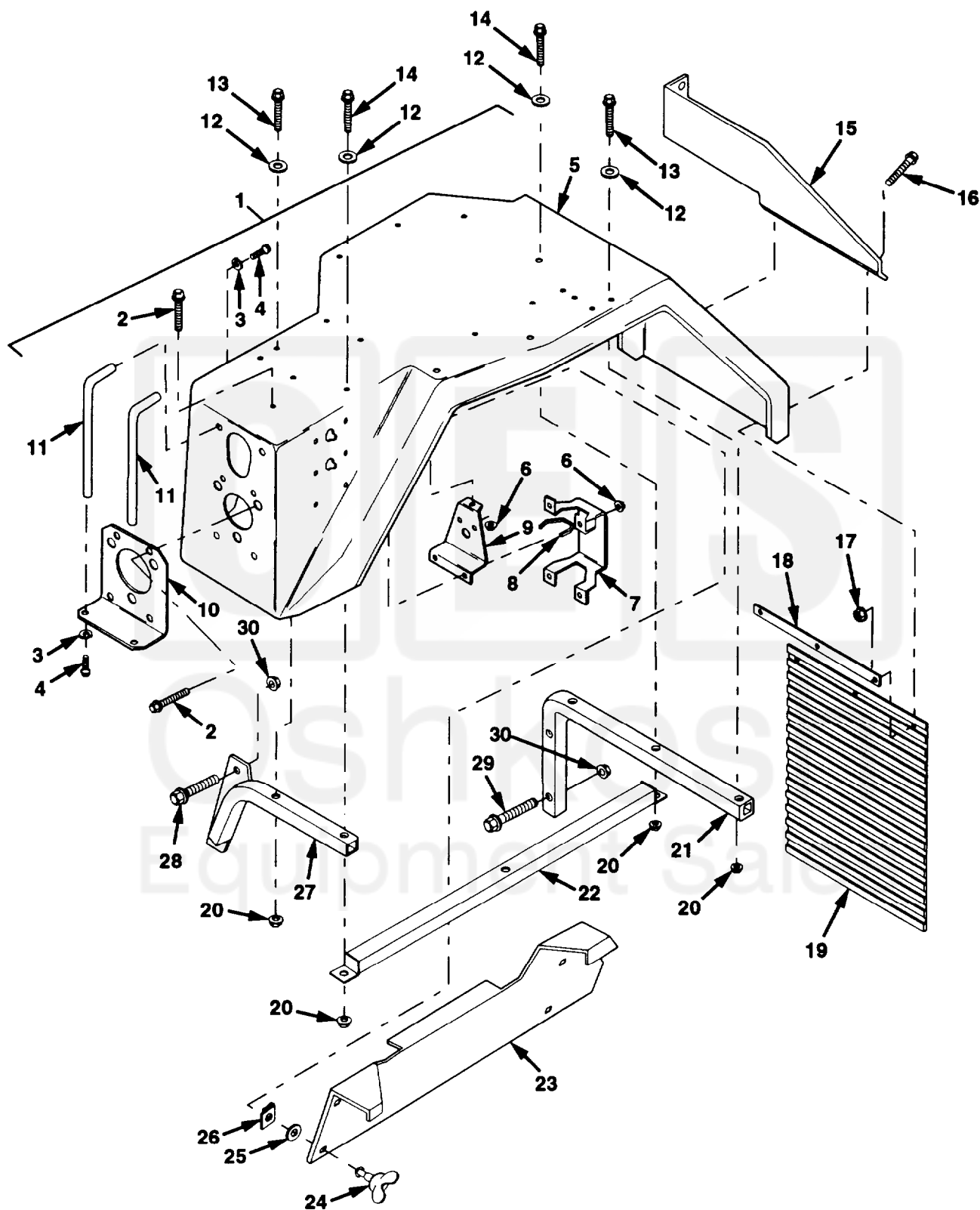


Figure 208. Left Front Fender

Section II. REPAIR PARTS LIST

(1) ILLUSTRATION		(2)	(3)	(4)	(5)	(6) DESCRIPTION	(7)	(8)
(a) FIG NO.	(b) ITEM NO.	SMR CODE	NATIONAL STOCK NUMBER	CAGE	PART NUMBER	USABLE ON CODE	UM	QTY INC IN UNIT
						GROUP 1802 LEFT FRONT FENDER		
208	1	PFO00	2510-01-354-8231	45152	1805130U	FENDER ASSEMBLY LH	EA	1
208	2	PAOZZ	5306-01-287-5715	52167	WC0414PB	.BOLT, MACHINE 3/8-16 X 1 1/4	EA	5
208	3	PAOZZ	5310-00-584-5272	96906	MS35338-48	.WASHER, LOCK 1/2	EA	4
208	4	PAOZZ	5305-00-044-4153	96906	MS90725-109	.SCREW, CAP, HEX 1/2-13 X 1	EA	4
208	5	PFOZZ	2510-01-354-2856	45152	1802830	.FENDER, LH FRONT	EA	1
208	6	PAOZZ	5310-01-288-1116	82458	T893R	.NUT, SELF-LOCKING 3/8-16	EA	5
208	7	PFOZZ	6220-01-355-9742	45152	1898740	.GUARD, LAMP	EA	1
208	8	MOOZZ	- - -	45152	26947BX-10	.MOLDING, QUICKEDGE MAKE FROM PART NUMBER 75000317, CAGE 78175. APPROXIMATELY 10 INCHES LONG.	EA	1
208	9	PFOZZ	2590-01-354-2551	45152	1895990	.BRACKET, VEHICULAR	EA	1
208	10	PFOZZ	2590-01-353-9702	45152	1895980	.BRACKET, VEHICULAR	EA	1
208	11	PFOZZ	6220-01-355-8929	45152	1896000	.GUARD, LAMP	EA	2
208	12	PAOZZ	5310-00-880-0626	19207	10892331	WASHER, FLAT 3/8	EA	5
208	13	PAOZZ	5305-01-357-4682	45152	1754310	SCREW, THD FORMING 3/8-16 X 3	EA	3
208	14	PAOZZ	5305-01-223-7034	45152	2012HX1	SCREW, THREAD FORMING 3/8-16 X 3 1/4	EA	2
208	15	PFOZZ	2510-01-354-0451	45152	1867650	BRACE, FENDER LH	EA	1
208	16	PAOZZ	5305-01-353-8267	45152	1754220	SCREW, CAP 5/16-18 X 1 1/2	EA	3
208	17	PAOZZ	5310-01-340-5671	45152	1333510	NUT, SELF-LOCKING 5/16-18	EA	3
208	18	PFOZZ	5340-01-353-6392	45152	1909270	PLATE, MOUNTING	EA	2
208	19	PFOZZ	2540-01-354-0590	40501	C05772	GUARD, SPLASH	EA	1
208	20	PAOZZ	5310-01-288-1116	82458	T893R	NUT, SELF-LOCKING 3/8-16	EA	5
208	21	PFOZZ	2510-01-354-0450	45152	1803660W	BRACE, FENDER	EA	1
208	22	PFOZZ	2590-01-414-9310	45152	2030030W	BRACKET. REINFORCEMENT	EA	1
208	23	PAOZZ	2510-01-354-2789	45152	1913800	FENDER, INNER LINER	EA	1
208	24	PAOZZ	5325-00-291-0165	94222	85-12-280-16	STUD, 1/4 TURN	EA	4
208	25	PAOZZ	5310-01-393-9923	45152	2036160	WASHER, RETAINING	EA	4
208	26	PAOZZ	5325-00-998-3351	94222	85-47-101-15	RECEPTACLE, 1/4 TURN	EA	4
208	27	PFOZZ	2510-01-354-0449	45152	1803490W	BRACE, FENDER RH	EA	1
208	28	PAOZZ	5305-01-150-7736	52167	WH0616TB	SCREW, CAP, HEXAGON 1/2-13 X 1 1/2	EA	2
208	29	PAOZZ	5306-01-155-9765	45152	115304A	BOLT, MACHINE 1/2-13 X 1 1/4	EA	2
208	30	PAOZZ	5310-01-159-8178	45152	110310A	NUT, SELF-LOCKING 1/2-13	EA	4